

Sublease Available
SECOND & SENECA



CONTACT

Michael Finch
206.757.8895
michaelfinch@centurypacifclp.com

3,394 SF
1191 Second Avenue
Seattle, WA 98101

**CENTURY
PACIFIC**

CenturyPacific, LLLP
1201 Third Avenue, Suite 1680
Seattle, Washington 98101
CenturyPacificLP.com

OVERVIEW: 3,394 SF office space in the heart of Seattle's business district.

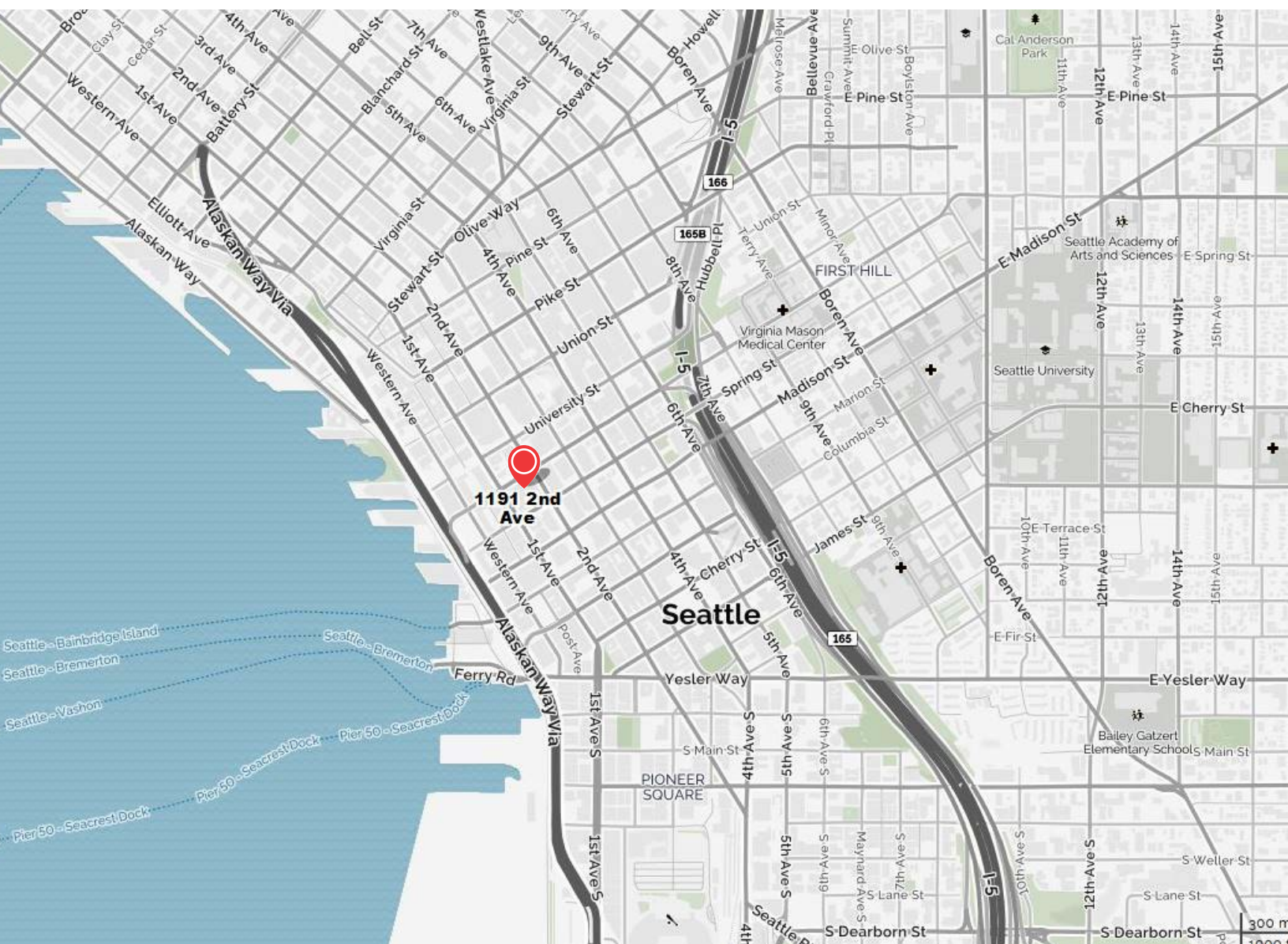
CONDITION: Space is move-in ready and offered "as-is".

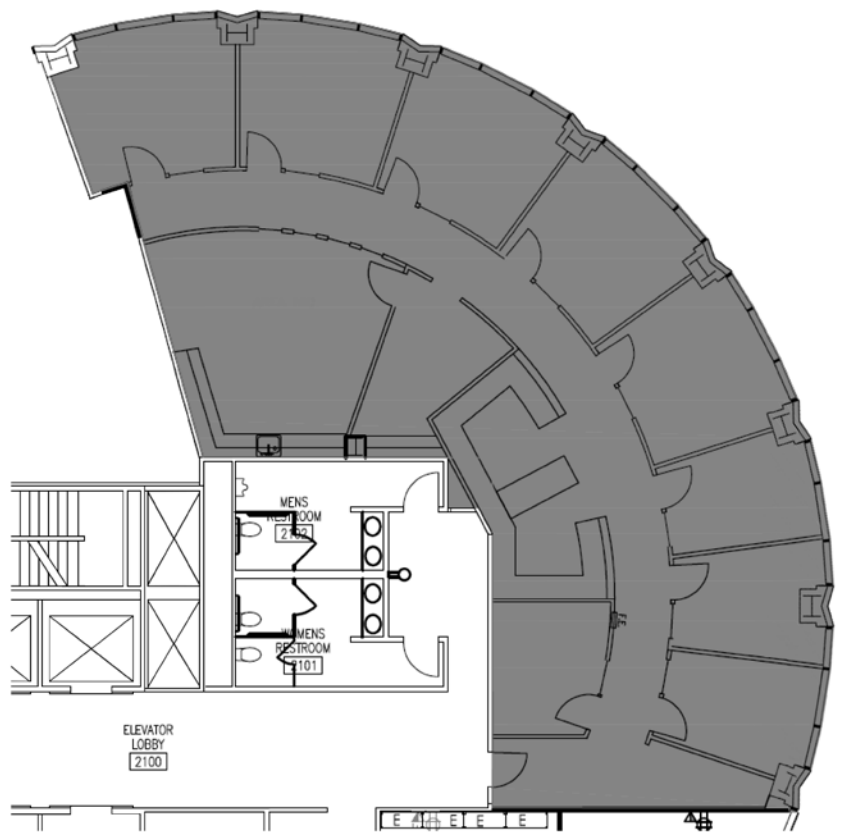
OCCUPANCY/TERM: Available immediately. Term through 7/31/2022.

LOCATION: Centrally located and within walking distance of Benaroya Hall, Seattle Art Museum, Seattle Public Library, Ferry Terminal, Seattle Waterfront, Pike Place Market and the Seattle Aquarium.

AMENITIES: Expansive Puget Sound views, fitness facility, Starbucks. Excellent dining, shopping & recreation options within walking distance.

TRANSPORTATION: Ready access to I-5, 520, I-90 & Highway 99.





3,394 RSF

CONTACT

Michael Finch
206.757.8895
michaelfinch@centurypacificlp.com

CENTURY
PACIFIC

CenturyPacifc, LLLP
1201 Third Avenue, Suite 1680
Seattle, Washington 98101
CenturyPacifcLP.com